

# What's new!

By In-Yacht Team - October 2024

- **Close multipleTasks at once**
- **Inline Actions** Fill a Form, Postpone a task directly from the list view
- **Edit in Line** Edit information without opening the detail window. Easily edit Crew Profiles, Tasks details, Drills information and more
- **Conditional Formatting** It will be more immediate to navigate and find what you are looking for with the new colours, icons and filters
- **HTML editor for Task description** Better organise job descriptions with the new editor
- **Improved Drag&Drop feature** Upload directly from your PC files explorer as many documents as you need!
- **Form Revision** If you are interested in keeping track of past revisions you can now do so!
- **Minor Improvements** Measure Gap field, personal/work email,...

Click [here](#) and contact us to know more about the update!

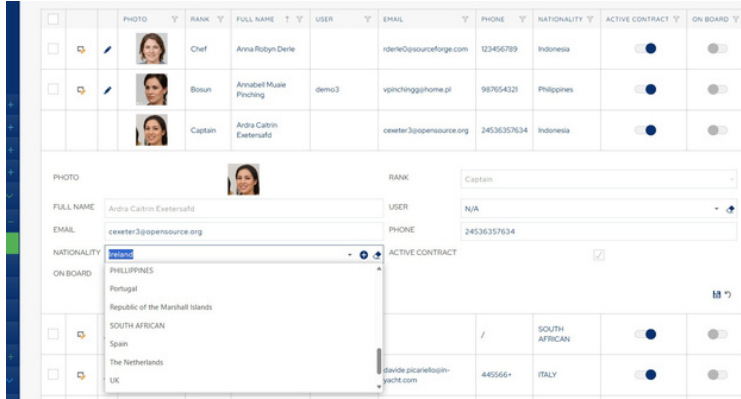
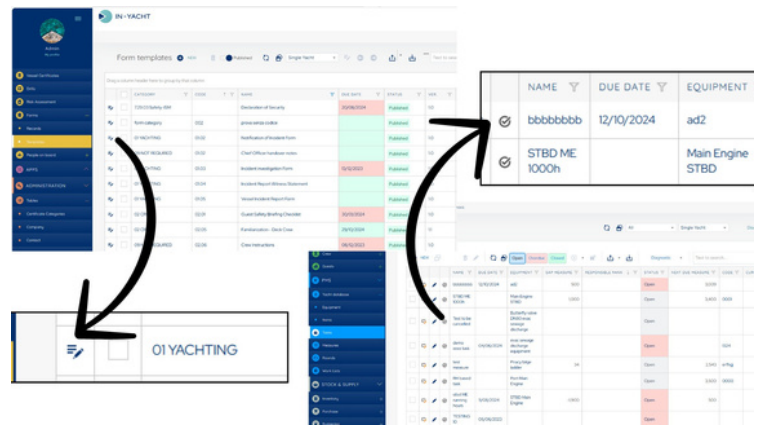
		NAME	DUE DATE	EQUIPMENT	GAP MEASURE	RESPONSIBLE	STATUS
<input type="checkbox"/>	<input type="checkbox"/>	2 Month checks on HPP Steering system	26/12/2024	Steering System HPP	21	Chief Engineer	Open
<input type="checkbox"/>	<input type="checkbox"/>	2 WEEK/100h checks on HPP	15/10/2024	Steering System HPP	100	Chief Engineer	Open
<input type="checkbox"/>	<input type="checkbox"/>	3 Month checks on HPP Steering system	26/05/2025	Steering System HPP		Chief Engineer	Open
<input checked="" type="checkbox"/>	<input checked="" type="checkbox"/>	3 way valve test	27/03/2024	Edge Oil Separator		Chief Engineer	Open
<input type="checkbox"/>	<input type="checkbox"/>	6 Month checks on HPP Steering system	23/05/2025	Steering System HPP		Chief Engineer	Open
<input type="checkbox"/>	<input type="checkbox"/>	After the first 3 working monthward further once a year	26/10/2025	Steering System HPP		Chief Engineer	Open
<input type="checkbox"/>	<input type="checkbox"/>	Annual Maintenance	23/03/2024	Bowditch Appliance		Chief Engineer	Open
<input type="checkbox"/>	<input type="checkbox"/>	ANNUALLY (pincer overhaul)	30/03/2024	Steering System Oil Reserve tank		Chief Engineer	Open
<input type="checkbox"/>	<input type="checkbox"/>	ANNUALLY (pincer overhaul)	30/03/2024	Emergency Steering Wheel		Chief Engineer	Open
<input type="checkbox"/>	<input type="checkbox"/>	Antiheuling supply WL				Chief Officer	Open
<input type="checkbox"/>	<input type="checkbox"/>	A-pipe					Open

## Close multipleTasks at once

We have introduced what for us will be a significant breakthrough in PMS management. You will now be able to select several tasks at a time and mark them as closed with a single click! Try it out and let us know what you think

## Inline Actions

On tasks and forms, you will now find the most frequent actions conveniently on the line! Specifically the button to close a task and the button to fill in a form. We are working on expanding this change to other modules as well, so stay tuned!

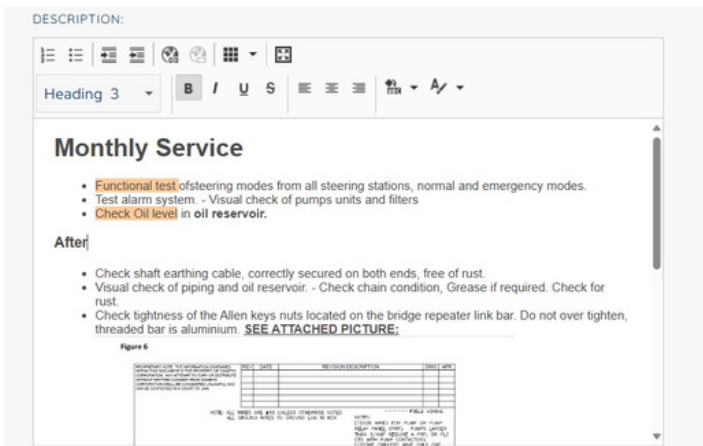
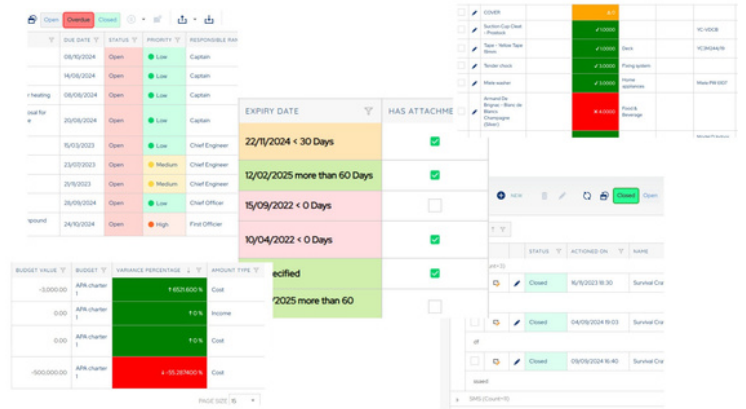


## Edit in Line

When you need to quickly edit a few fields or make rapid changes to several rows in a table, you can now take advantage of inline editing with form expansion. This will allow you to make more changes faster without losing focus on the list you are editing! Try it in Tasks, Crew, Drill and more.

## Conditional Formatting

We know how difficult reading and navigating through multiple data can be, especially in order to understand which data needs immediate attention. That is why we have added new conditional formatting in many places to help you when browsing and reading from tables.

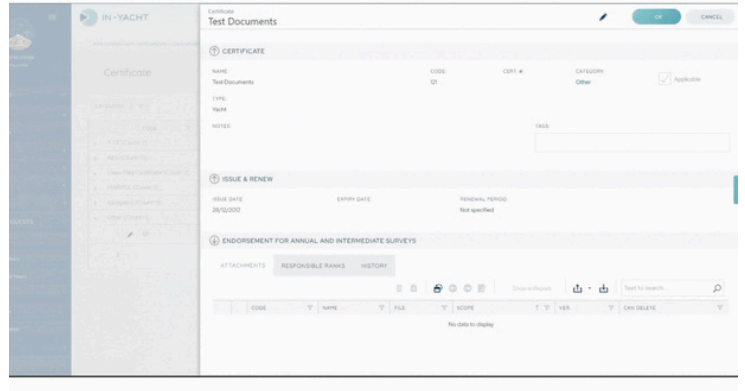


## HTML editor for Task description

The description of a Task is one of the key elements. With the new Editor it is now possible to paste Images, special characters, underline or highlight texts and change font and size.

## Improved Drag&Drop feature

Drag&Drop is a feature that proved to be very handy. This is why we decided to focus on improving it further, making it possible to now upload far more documents at once, removing the limit in file size and quantity.



## Form Revision

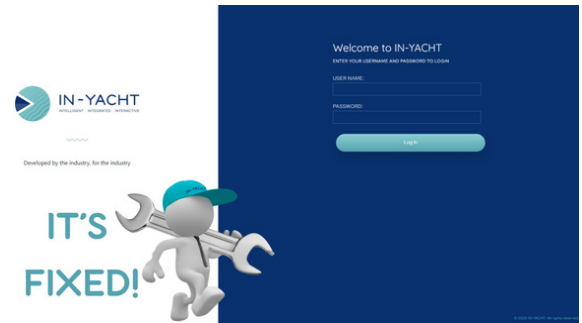
If you need to keep tracks of all the amendments that are made in the Forms Templates, you now can! With this update we made it possible to revise Forms so that Managers or Officers can modify them to suit the needs while keeping all past records at hand.

CATEGORY	CODE	NAME	ISSUE DATE	STATUS	VER.	IN REVIEW
729/03 Safety-SM		Declaration of Security	29/08/2024	Published	10	<input type="checkbox"/>
Form category	002	prova senza codice		Published	11	<input checked="" type="checkbox"/>
01 YACHTING	01.02	Notification of Incident Form		Published	10	<input type="checkbox"/>
09 NOT REQUIRED	01.02	Chief Officer handover notes		Published	10	<input type="checkbox"/>
01 YACHTING	01.03	Incident Investigation Form	15/02/2023	Published	10	<input type="checkbox"/>
01 YACHTING	01.04	Incident Report Witness Statement		Published	10	<input type="checkbox"/>
01 YACHTING	01.05	Vessel Incident Report Form		Published	10	<input type="checkbox"/>
02 CREW	02.01	Guest Safety Briefing Checklist	30/09/2024	Published	10	<input type="checkbox"/>
02 CREW	02.05	Familiarisation - Deck Crew	29/02/2024	Published	11	<input type="checkbox"/>
09 NOT REQUIRED	02.06	Crew Instructions	08/02/2023	Published	10	<input type="checkbox"/>

## Minor Improvements and Bug fixes

Improved the link between User and Contract. The user will immediately activate/deactivate based on the Contract Start/End date. Revised documents will now automatically take the new file's name (already present for new documents upload).

General Bug fixes and Quality of life updates.



[Open in browser](#) | [Unsubscribe](#)

This email was sent from support@in-yacht.com

